

CERTIFICATE OF LOCATION OF GOVERNMENT CORNER

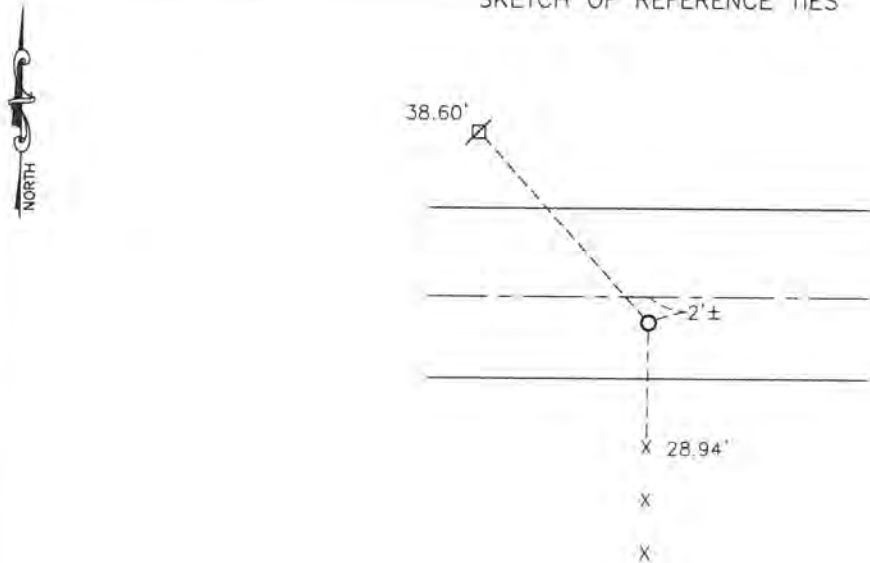
NORTH QUARTER Corner of Section 13, Township 107, Range 40, 5TH P.M.

STATE OF MINNESOTA, County of MURRAY

At the corner location shown on the sketch:

- On 7/18/17 found a 1-1/4"x1-1/4" perforated steel tube
- left monument as found, lowered monument, removed monument (explain)
- On _____ placed a _____

SKETCH OF REFERENCE TIES



Minnesota State Plane Coordinate
System Murray County Datum
NAD83 (1996)

N: 184594.647
E: 545713.244

Nail and bottle cap in fence post South 28.94'
Double headed nail and bottle cap in utility pole NW 38.60'

Statement of evidence relative to this corner location is on back of page.

I hereby certify that this document and the data contained herein was prepared by me or under my direct supervision.

[Signature] 9/18/17
SIGNATURE DATE

Registration No. 43844

- Land Surveyor, Professional Engineer
- County Surveyor, County Engineer

STATE OF MINNESOTA, }
COUNTY OF MURRAY, } ss.

I hereby certify that the within Instrument was filed in this office for record on the 12TH day of OCTOBER A.D. 20 17 at 11:00 o'clock A. M. and was duly recorded as Document No. —

[Signature]
County Recorder

Statement of Evidence

In 1861, L. Brockmann did the original subdivision of the township.

In 1964, D.N.R. Bureau of Engineering survey shows a railroad spike was set in the center of the east-west road and in line with fences to the north and the south.

In 1971, D.N.R. Bureau of Engineering found railroad spike at the corner.

On July 2, 1985, the D.N.R. Bureau of Engineering dug with a backhoe and found a railroad spike at the corner. The D.N.R. Bureau of Engineering accepted the railroad spike and set a 1-1/4"x1-1/4"x10" perforated steel tube with aluminum cap stamped "D.N.R. SURVEY MARKER."

On July 18, 2017, Bueltel-Moseng Land Surveying found a 1-1/4"x1-1/4" perforated steel tube at the corner.